

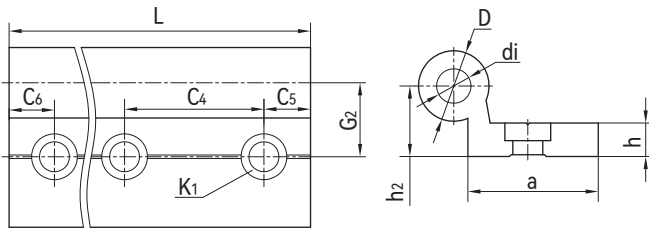
WR01单圆直线导轨 Linear guides, single round rail



产品特性 Product features

- 铝合金单圆导轨，硬质氧化表面
 - 配合LIN滑动膜抵抗污物
 - 重量轻和静音
 - 安装简单，免维护
 - 自由设计安装宽度
- Single guide rails made of aluminum, Hard anodized surface
 - Resistance to dirt with LIN liners
 - Weight saving and no noise
 - Simple installation, maintenance-free
 - Variable width can be fitted

标准规格 Standard specifications



产品编码 Part No.:

WR01-10-0000-NH

- 空白Blank: 带安装孔 With mounting holes
- NH: 无安装孔 No mounting holes
- 长度 Length
- 直径 Diameter

产品编码 Part No.	D [mm]	di [mm]	h [mm]	a [mm]	h ₂ [mm]	C ₄ [mm]	C ₅ =C ₆ [mm]		K ₁ [mm]	G ₂ [mm]	L max. [mm]	重量 Weight [kg/m]
							min.	max.				
WR01-10-0000	10	-	5.5	27	9	120	20	79.5	*M6	17	2500	0.62
WR01-16-0000	16	8	7.5	27	14	120	20	79.5	M8	19	2500	0.98
WR01-20-0000	20	10.2	9.5	27	20	120	20	79.5	M8	21	2500	1.32
WR01-25-0000	25	14	11.5	32	25	150	25	99.5	M10	25.5	3000	2.30

*M6: 通孔 Plain holes

产品编码 Part No.	D [mm]	di [mm]	h [mm]	a [mm]	h ₂ [mm]	C ₄ [mm]	C ₅ =C ₆ [mm]		K ₁ [mm]	G ₂ [mm]	L max. [mm]	重量 Weight [kg/m]
							min.	max.				
WR01-10-0000-NH	10	-	5.5	27	9	-	-	-	-	-	2500	0.62
WR01-16-0000-NH	16	8	7.5	27	14	-	-	-	-	-	2500	0.98
WR01-20-0000-NH	20	10.2	9.5	27	20	-	-	-	-	-	2500	1.32
WR01-25-0000-NH	25	14	11.5	32	25	-	-	-	-	-	3000	2.30